



## HL-11091 Series

- \*Stand Model
- \*Four Fixed Speeds
- \*Easy Speed-shifting
- \*100% Gear Driven
- \*Long-Life Gearbox
- \*Heavy Duty Construction
- \*Powerful Motor
- \*# 12 Hub

### Standard Accessories :

- \*Spiral Dough Arm
- \*Flat Beater
- \*Wire Whip
- \*60 Quart Bowl
- \*Bowl Truck

### Optional Accessories :

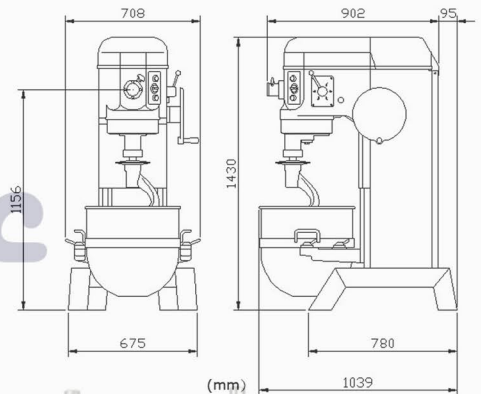
- \*30 Quart Bowl
- \*30 Quart Spiral Dough Arm
- \*30 Quart Flat Beater
- \*30 Quart Wire Whip
- \*Timer
- \*Safety Guard
- \*Vegetable Slicer Attachment
- \*Meat Grinder Attachment
- \*Digital Control Panel
- \*Power Lift
- \*Scraper



**HL-11091**



**HL-11091AT**



Model No.	Bowl Capacity	Motor	Agitator Speeds(RPM)	Hub	Safety Guard	Timer	Digital Control Panel	N.W.
HL-11091	60 Quart (57 Liter)	3HP 2.25 Kw	60HZ:101/178/297/523 50HZ:84/148/248/436	Std.	-	-	-	450Kg (990Lbs.) ~455Kg (1001Lbs.)
HL-11091A				Std.	Std.	-	-	
HL-11091T				Std.	-	Std.	-	
HL-11091ATL				Std.	Std.	Std.	-	

A-Safety Guard T-Timer D-Digital Control Panel L-Power Lift 1 Quart=0.95Liter

\*The above specifications do not include all possible combinations of optional accessories.

\*Available machine voltages are 220-60-1, 220-60-3, 220-50-1, 240-50-1, 380-50-3, 415-50-3.

\*Due to product improvement, specifications are subject to change without notice.