



REFRIGERATOR COMPACT K420 RG L1 5W

SERIES: COMPACT
ITEM NO.: 964200441

COMPACT K 420 models not only comply with the EU Ecodesign labelling regulation, but ranking in energy efficiency class B makes these refrigerators the most energy efficient compact models in the marketplace.

Correct and uniform temperature throughout the cabinet is critically important for a food storage cabinet. GRAM COMPACT provides this with a unique ventilated air distribution system and a robust refrigeration system with sufficient refrigeration capacity.

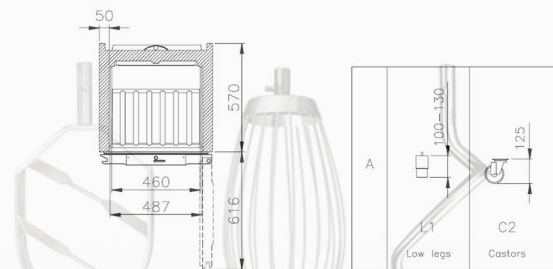
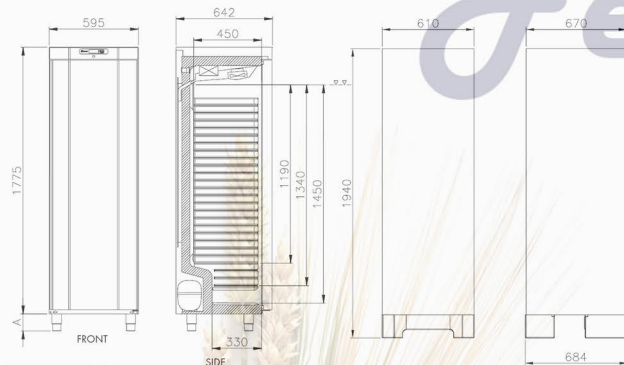
COMPACT is approved to endure up to 30°C ambient temperature (climate class 4). It further offers low heat emission with minimal compressor running time.

With a footprint of 59.5cm (W) x 64.2cm (D) x 187.5-190.5cm (H), these small space storage cabinets are easy to fit in especially when space is of a premium.

Materials exterior: Stainless
Materials interior: White polystyrene (PS) lining.
Shelf size: 48.6 x 43 cm
Door type: Solid door

- Air circulation system
- Right hand hinged reversible door
- Integrated full height door handle
- 5 anti tilt white shelves
- Door lock for extra security
- Pedal door opener for handsfree operation (optional accessory)
- Automatic defrost with re-evaporation of defrost water
- Low sound level of just 34.5 dB(A)
- Hydrocarbon refrigerant
- 10 year spare parts availability guaranteed

Refrigerant / GWP:
R 600a / 3 - (0.045kg/CO2 eq 0.14kg)



Model	Volume Gross	Net usable volume	Connection	Connection load	Energy efficiency class	Energy efficiency Index EEI	Annual energy consumption Ecodesign	Refrigeration capacity at -10°C	Climate class	Sound level	Insulation
Compact K 420 LG L1 5w	359 ltr	266 ltr	230 V, 50Hz	88W	B	31	325kWh	199W	4	34.5 db(A)	50mm (cyclopentane)
	Net dimensions W x D x H			Net weight	Packaged dimensions W x D x H			Packaged Weight	Packaged volume		
	595 x 642 x 1875 - 1905 mm			72kg	610 x 670 x 1940 mm			76kg	0.79 m ³		